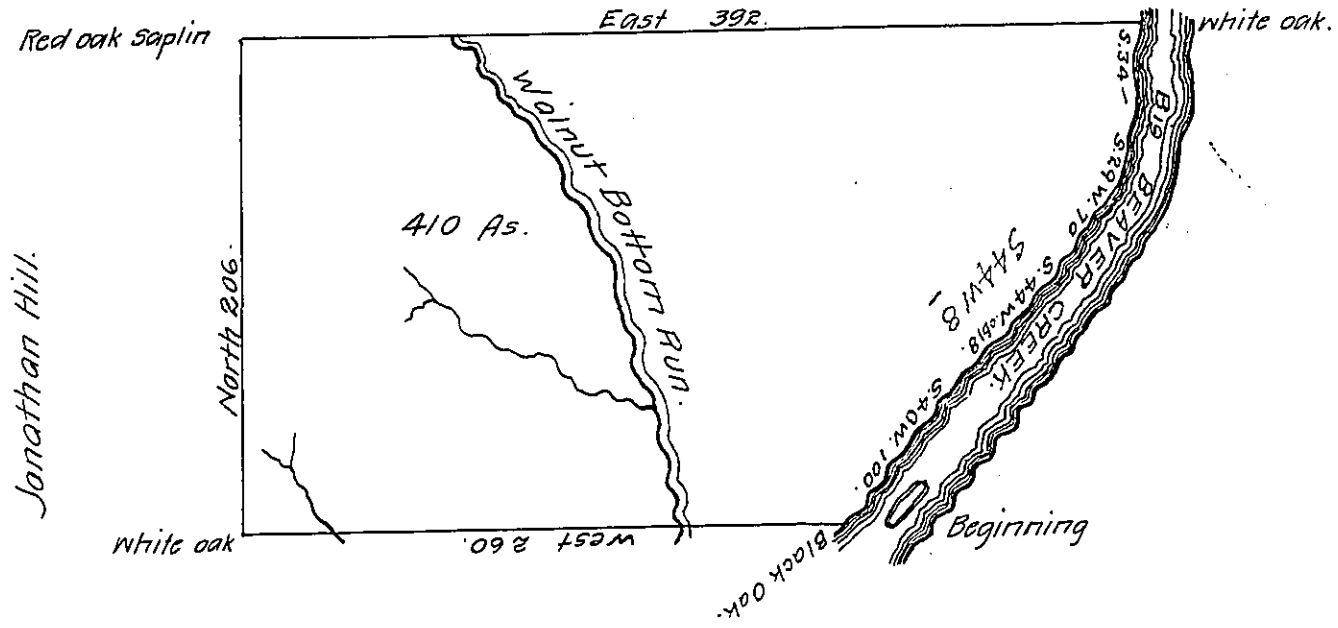


John Hill.

0-59



(Pg. 268)

The above is a draught of a tract of Land surveyed the 3^d day of April, 1794. In pursuance of a warrant granted to Joseph Williams Dated the 3^d day of April, 1792. for 400 Acres of Land, situate north & West of the River Ohio on the West Bank of Big Beaver Creek including the Walnut Bottom lying on the run that falls into said creek opposite a small Island between the Big and Little falls, by estimation one mile above the Black house in District No. 10, in Alleghany County Called Walnut Bottom, containing four hundred & ten acres together with the usual allowance of six per Cent. for Roads

To Daniel Brodhead, Esq;
Surveyor General.

Jonathan Leet, D.S.

IN TESTIMONY that the above is a copy of the original remaining on file in the Department of Internal Affairs of Pennsylvania, made conformably to an Act of Assembly approved the 16th day of February, 1833, I have hereunto set my Hand and caused the Seal of said Department to be affixed at Harrisburg, this seventh day of March, 1911.

Henry Aouch
Secretary of Internal Affairs.

PENNSYLVANIA